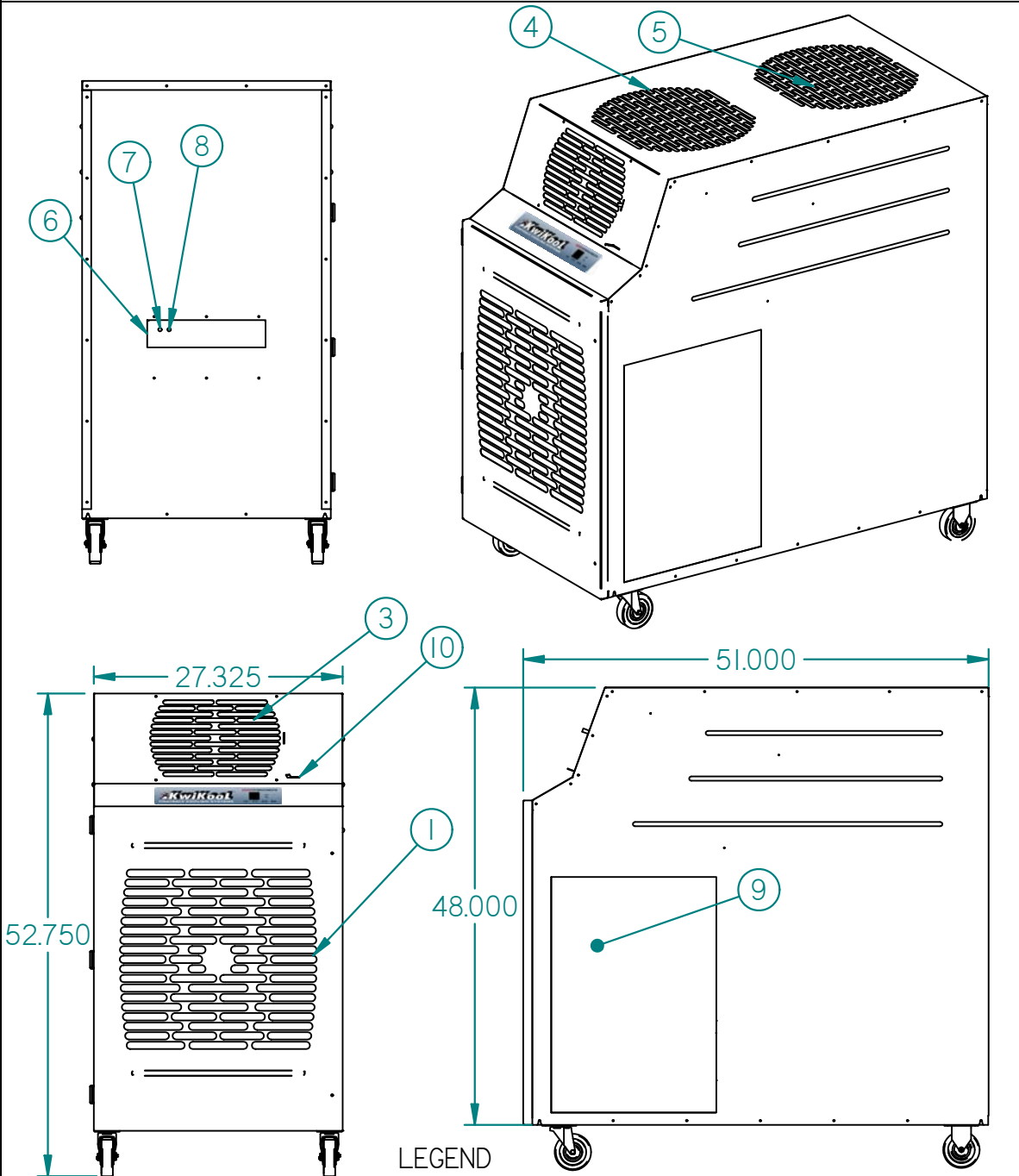


# KIB6021



LEGEND

- |                        |                         |
|------------------------|-------------------------|
| 1 Cold Air Return      | 6 Power Cord            |
| 2 Control Pad          | 7 Condensate Nipple     |
| 3 Cold Air Supply      | 8 Condensate Alarm Jack |
| 4 Condenser Air Inlet  | 9 Access Door           |
| 5 Condenser Air Outlet | 10 Vent Control         |



# SPECIFICATIONS

# KIB6021 - 5 Ton

<b>COOLING CAPACITY</b>		
	BTU/hr @ 95F at 60% RH	60,000 (5 Tons)
<b>COMPRESSOR DATA</b>		
	Compressor Type	Hermetic Recip.
	Operating Temperatures	60-110 F 50%RH
	Refrigerant	407C
<b>FAN DATA</b>		
<b>Evaporator</b>		
	Fan Type (Centrifugal)	Direct Drive
	Air Flow (CFM)	2000/3 Speed
	Supply Air Device	Adjustable Vent
	Supply Air Chute Data (optional)	2 - 10" Dia. x 24" Length
	Supply Air Chute Max. Length	50'
<b>Condenser</b>		
	I/O Integral Condenser	Balanced Air Flow
	Fan Type (Centrifugal)	Direct Drive
	Air Flow (CFM)	3500
	Condenser Duct Specs (optional)	2 - 18" Dia. x 8' Length
	Condenser Duct Max. Length	65'
<b>ELECTRICAL DATA</b>		
	Power Supply (Volts)	208/230 - Single Phase
	Current Consumption (Amps)	42.68/38.8
	Power Consumption (Watts)	8.8
	Maximum Circuit Breaker (Amps)	60 on 208V/50 on 230V
	Minimum Circuit Capacity(Amps)	45.3
	Min./Max. Voltage	195-225/210-250
	Power Cord Gauge/Length	8 AWG/10'
	Plug Configuration	Field Supplied
<b>DIMENSIONAL DATA</b>		
	Width x Depth x Height (Inches)	27.375" x 51" x 52.75"
	Weight (Lbs.)	557
	Shipping Weight (Lbs.)	657
	Ceiling Kit Weight (Lbs.)	56
	Shipping Weight w/ Ceiling Kit	728
<b>SAFETY DEVICE DATA</b>		
	Compressor Overload	Internal
	Fan Motor Overload	Automatic Internal
	Evaporator Freeze Protection	Hot Gas Bypass
	High Pressure Switch	Manual
	Low Pressure Switch	Automatic
	Compressor Short Cycle	Yes
	Automatic Restart	Yes
	Thermostat Type	Microprocessor/Digital
	Condensate Pump Overflow	Yes
	Condensate Tank Overflow	Yes

**1-800-KWIKOOL**